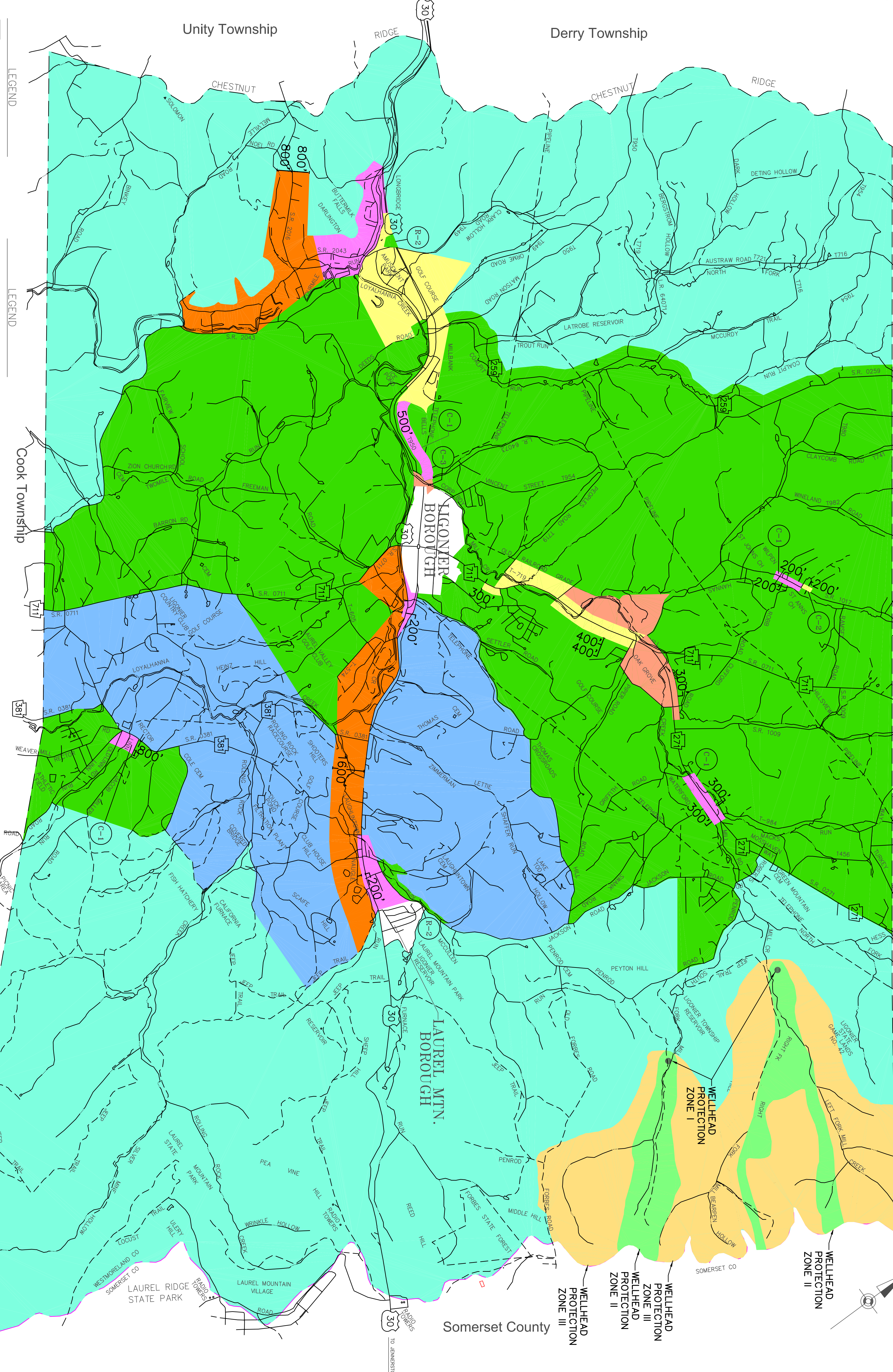


N 335000 N 340000 N 345000 N 350000 N 355000 N 360000 N 365000 N 370000



LEGEND

- WELLHEAD PROTECTION ZONE I
- WELLHEAD PROTECTION ZONE II
- WELLHEAD PROTECTION ZONE III

LEGEND

- C-D - CONSERVATION DISTRICT
- C-1 - VILLAGE COMMERCIAL
- C-2 - GENERAL COMMERCIAL
- C-3 - LIGHT INDUSTRIAL
- R-A - RURAL AGRICULTURAL
- R-1 - RESIDENTIAL-1
- R-2 - RESIDENTIAL-2
- MUNICIPALITY NOT INCLUDED IN TOWNSHIP

# TOWNSHIP OF LIGONIER

## ZONING MAP-WHP MAP

Westmoreland County, Pennsylvania  
September, 1997

MAPPING DIGITIZED FROM U.S.G.S. 7.5 MINUTE QUADRANGLE MAPS  
QUADRANGLE MAPS PHOTO REPRODUCED 1973 & PHOTO INSPECTED 1977

GRAPHIC SCALE  
1500' 0' 1500' 3000' 6000'

Fairfield Township

Cook Township

Cook Township

Somerset County

LAUREL MOUNTAIN BOROUGH

LAUREL MOUNTAIN BOROUGH

